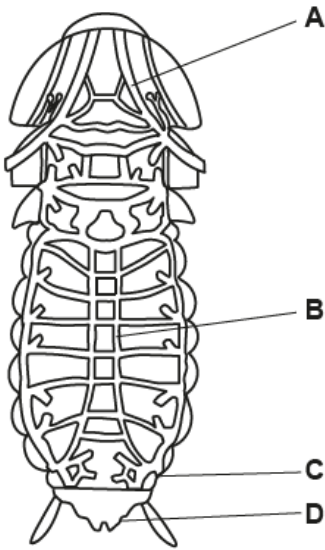


Exchange surfaces – 2021/20 GCE AS Biology A**1. Nov/2020/Paper-H020/01/No.10**

The drawing below shows the respiratory system of an insect.



Which of the letters, **A** to **D**, shows a spiracle?

Your answer

[1]

2. Nov/2020/Paper-H020/01/No.11

Which of the following muscles in the mammalian ventilation system contract to force air out of the lungs?

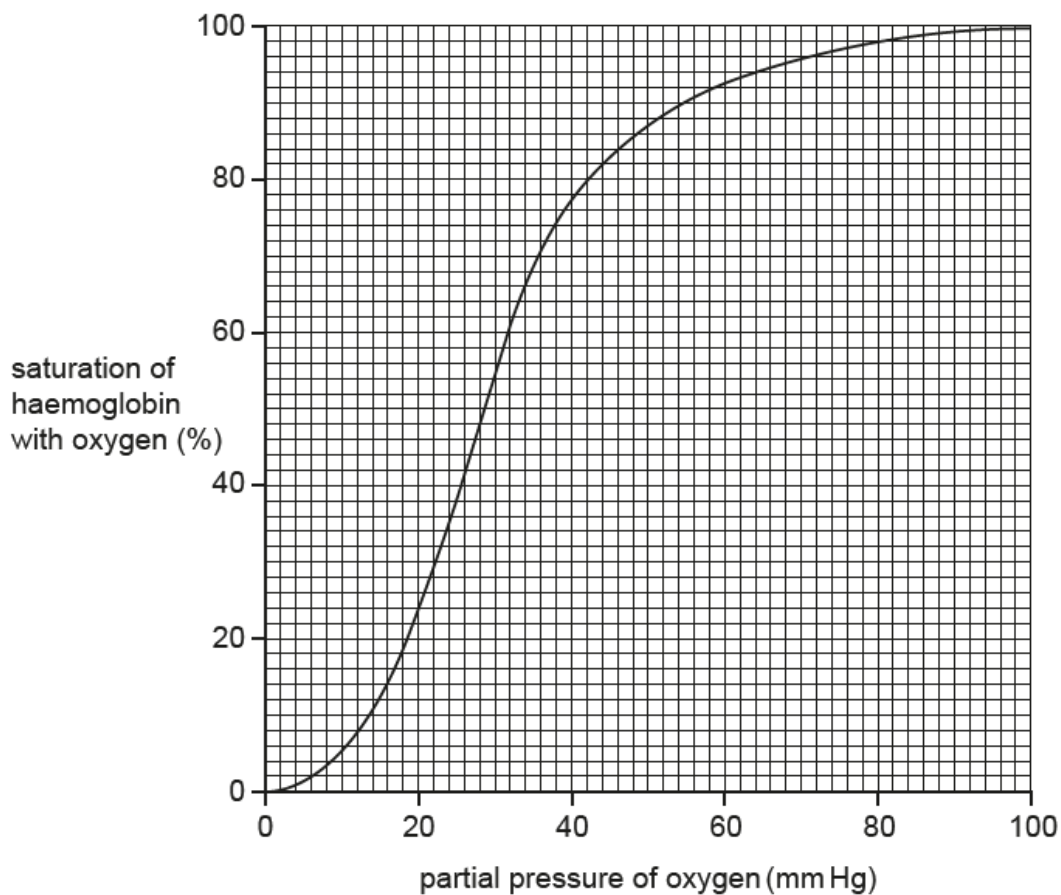
- A** all of the muscles in the mammalian ventilation system
- B** the external intercostal muscles
- C** the diaphragm
- D** the internal intercostal muscles

Your answer

[1]

3. Nov/2020/Paper-H020/01/No.17

The graph below shows the oxygen dissociation curve for adult human haemoglobin.



What is the proportion of oxygen molecules released by haemoglobin between 40mmHg and 20mmHg?

- A** 0.31
- B** 0.69
- C** 2.21
- D** 3.21

Your answer

[1]